



POLICON
Engineering & Manufacturing

Installation of washing pump-compressor tubes

Installation of washing pump-compressor tubes



Description

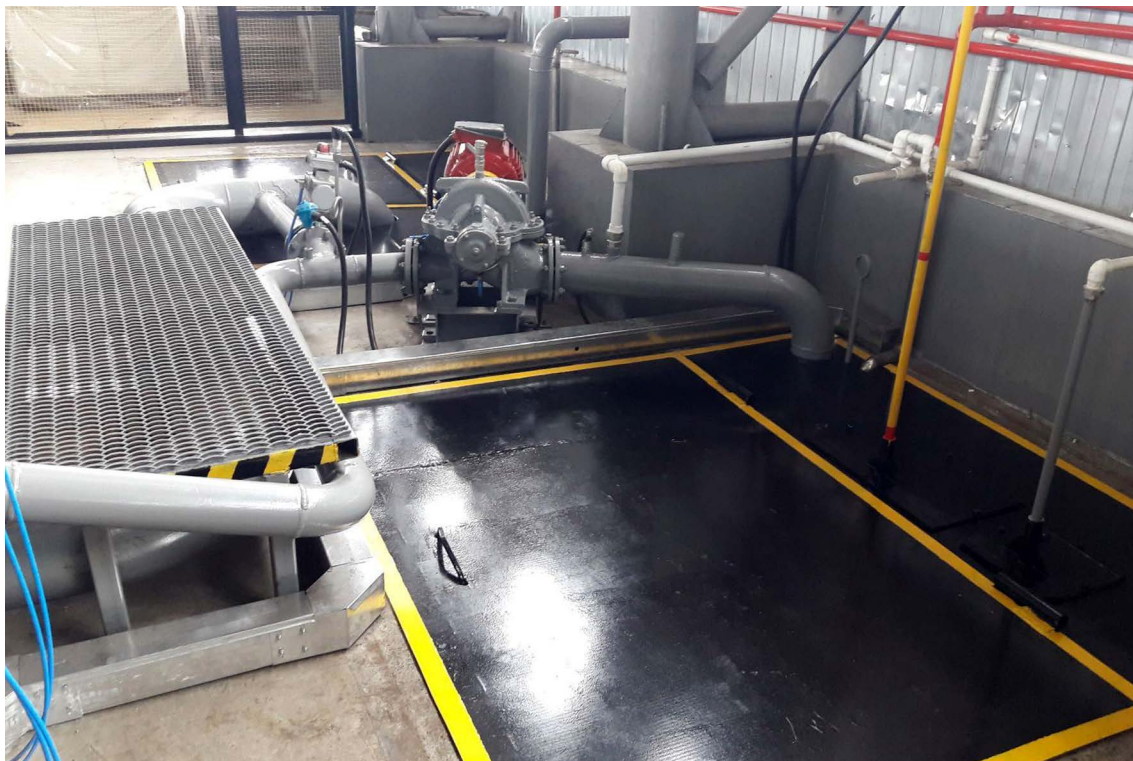
Installation of washing pump-compressor tubes is designed to clean the outer and inner surfaces of tubing from asphalt-resin-paraffin deposits (ARPD).

The installation is used in combination with other equipment in technological lines for the repair of tubing, and can also be used independently outside production lines.



Installation kit:

- Loading rack (overall dimensions are coordinated with the Customer);
- Roller conveyor loading pump compressor tubes in the sink;
- Installation of washing;
- Roller conveyor unloading pump compressor tubes from the sink;
- Water treatment and sludge separation system (3 tanks with a total volume of 45 m³, pump room) (the number of tanks and the general layout are agreed with the Customer);
- Remote Control;
- Electro / Pneumatic equipment;
- Passport and operation manual;
- Devices for heating the washing liquid (gas / electric boilers are purchased by the Customer);
- Exhaust pipe (manufactured by the Customer).



The quality of the washing of pump-compressor tubes and the capacity of the Plant depends largely on the quality of the water treatment system.

This description presents the minimum required system.

If the Customer is interested, our Company is ready to offer a more productive water treatment system taking into account the specific operating conditions and typical pollution of the pipes being repaired.

Technical Specifications:

Mode of operation.....	Auto / Manual - 1 operator
Diameter of the processed pipes, mm.....	60, 73, 89
Tubing length, mm.....	6 500 – 10 500
Number of simultaneously processed pipes, pcs.....	4
Pipe processing method.....	Washing the outer and inner surfaces of pipes with a stream of washing liquid
Washing liquid.....	Hot water with adding reagents
Washing liquid temperature, °C.....	80 - 90
Fluid working pressure, MPa (atm).....	0,3 (3,0)
Power supply, V / Hz.....	380/50
Productivity in auto mode, (depending on the degree of pollution), pcs / hour.....	24 - 40
Rated power consumption, kW.....	10,0
Pump power (2 pcs) for washing liquid, kW	30,0
Working pressure in the pneumatic system, atm.....	6,0
Overall dimensions, mm (without remote control and pneumatic system):	
length including conveyors for loading and unloading pipes	2 200/36 000
width including loading rack	1 500/4 500
height.....	1,600
Installation axis height	850
Weight, kg	9 000

This product can be manufactured according to the customer's specifications, taking into account its specified parameters and features.

Food Machinery

Machinery for tires, rubber, plastics manufacturing

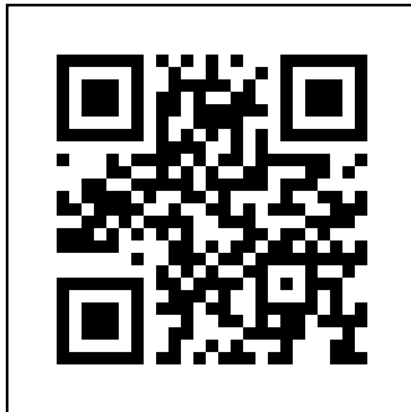
Modernization and automation of production

Non-standart equipment

Production of spare parts, components, assemblies

**Outsourcing services - repair and maintenance
of equipment**

Global engineering solutions



Policon JSCo

194 Lermontov Str, Omsk 644009, Russia

Tel./Fax: +7 (3812) 36 74 12, 36 74 02, 48 48 30

e-mail: info@policon-rt.ru

www.policon-rt.ru